

(2004-1997)

* :

**

**A Review of The Performance of The Monetary Policy in Egypt
During (1997-2004)**

Abstract

The purpose of this paper is to review the performance of the monetary policy in Egypt during (1997-2004). Many salient economic laws and decrees were promulgated, such as the law NO 88/2003 on the central bank of Egypt (CBE), the banking system and currency. Also the decree on liberalizing the L.E. exchange rate. In addition to reduce the discount rate and reserves ratio. The main finding after reviewing the monetary and banking policy and developments in monetary aggregate, the monetary authorities couldn't achieve all the objectives of the monetary policy. The Egyptian pound lost 86% of its value in 2004 compared with 97. As a reflection, the inflation rate became double although the decreasing in the monetary expansion. Moreover, the net international reserves declined by 26.7% in the same period as a result of CBE interference in the foreign exchange market as a seller of the foreign exchange. Finally, the paper makes a number of recommendations to activate the monetary policy such as, pegging the Egyptian pound to a basket of currencies, restructuring the interest rates, necessity of reducing the percent of credit provided by banks, move forward to incorporate a central authority (financial control committee) to supervise and control the financial sector, preparing and publicizing a monetary policy framework based on the principle of targeting inflation, offer more support to CBE and the Egyptian banking system, Moreover the CBE should enjoy real independence in defining monetary policy implementation tools .

*

hossien159@yahoo.com:

**

: (2004-1997)

(2004-1997)

2004	%86	-	-1997
2004	%11.1	-	-
		%26.7	20.2
	.1997	2004	14.8

(2004-1997)	(2004-1997)	-
(2004-1997)	(2004-1997)	-
(2004-1997)	(2004-1997)	-

5

130

(2004-1997)
(2004-1997)
(2004-1997)

-
:
:
:
:

:

1.

()

2.

4

3

5.

(2004-1997)

:

6-:

: (2004-1997)

: -1

7

: -2

: -3

2003 88

(6)

2004 64

-:

-

-

-

-

-

-

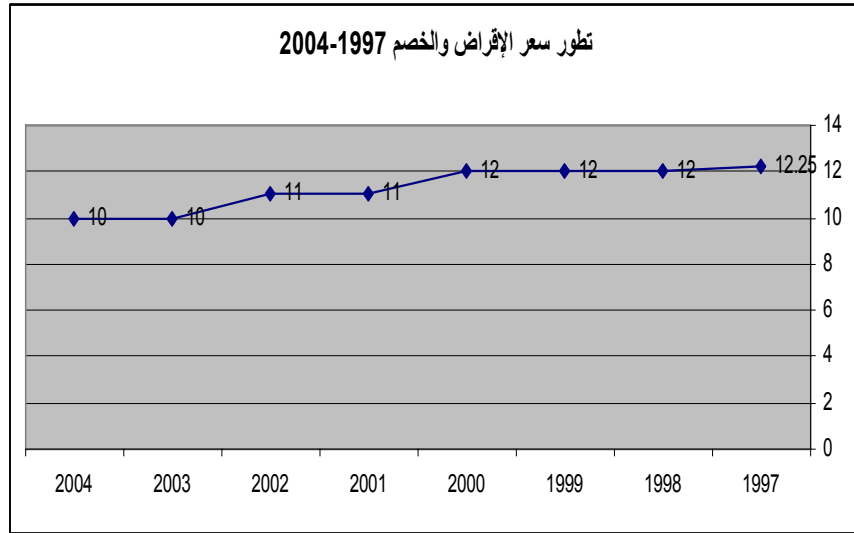
-

-

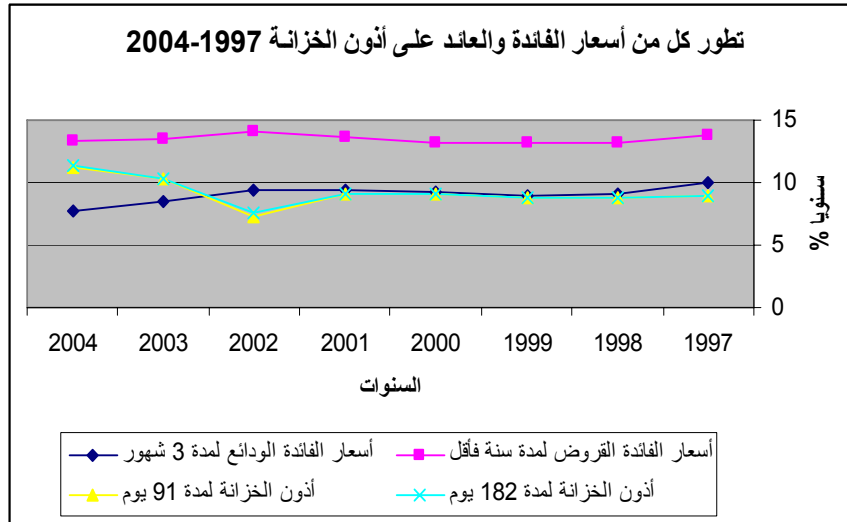
5

132

-(2004-1997)
8 : -1
(2004-1997)
1997 %12.25
%11 %12 1996 %13.5
%10 2002 11
2501
%10
.2004



%15 : -2
2002/2001
%14

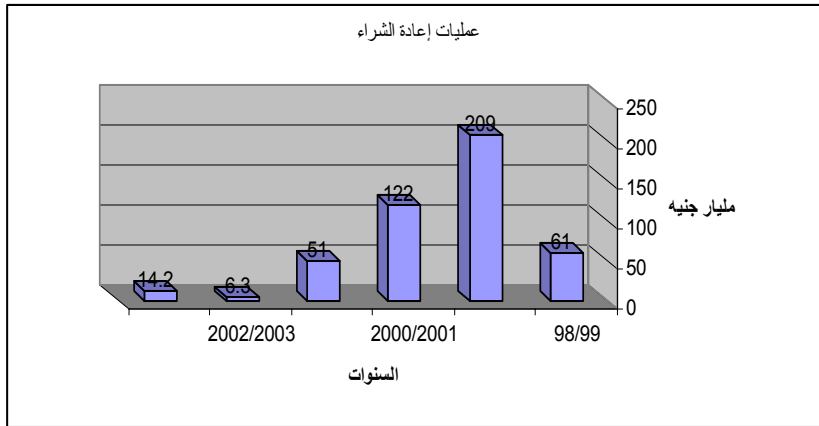


-4

2004/2003 - 1997/1996

61	2000/1999	209	1999/1998
122			
14.2	2003/2002	6.3	2001/2000
			2004/2003

: (2004-1997)



%25

%20

Outright Sale

Reverse Repos

9

.2004

10.9

20

14.2

5.5

¹⁰2004

: -5

11

/ 333
%1.8

1999

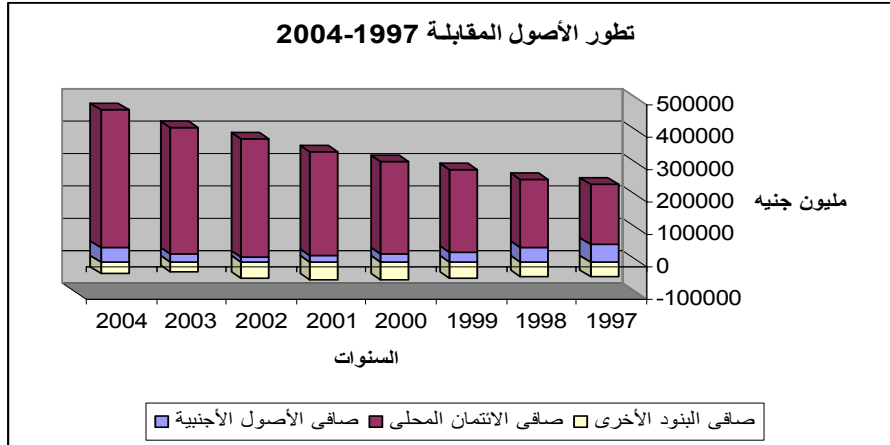
/ 339 1991

5

136

(2004-1997)

1997 56.1
%77.9 45.2 2004



صافي البنود الأخرى صافي الائتمان المحلي صافي الأصول الأجنبية

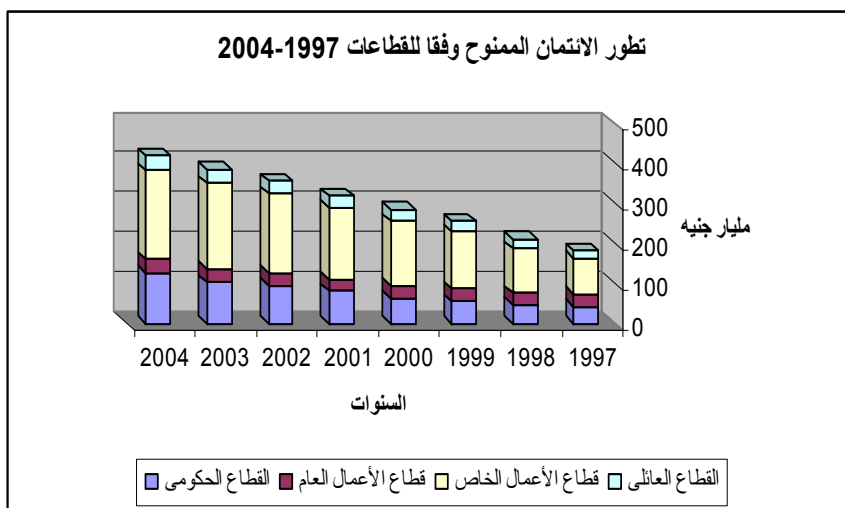
422 183.5 12.6% 1997 2004

52.8% 1997 47.9% 2004

29.9% 126.3 2004

23.8% 43.7 2004

16.4% 1997



()

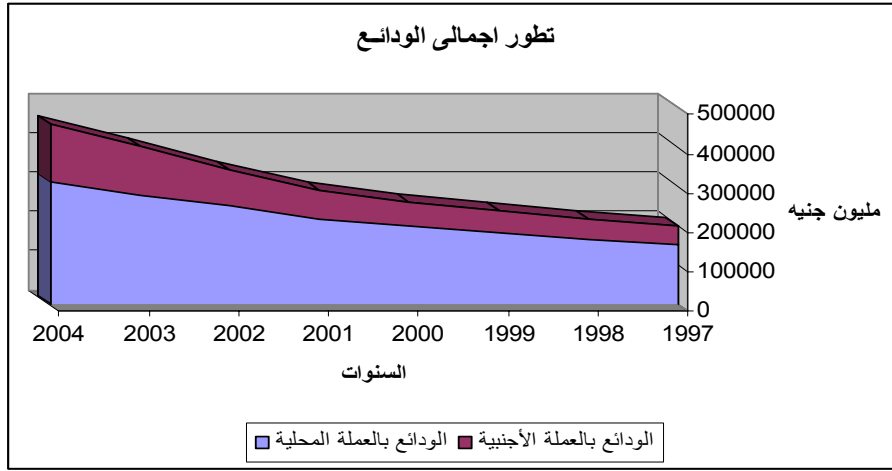
2003	28.61	17.1
%7.51	1997	45.71
2004	32.3	

(2004-1997)

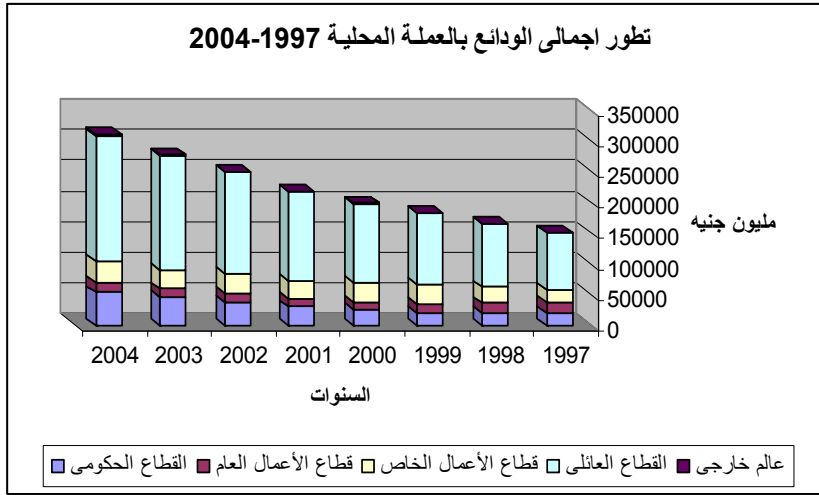
(3)

633.4	1997	302
%11.1	2004	
461.6	200.6	2004
	%72.9	1997
		%66.4

	-:			
	116.3			-
	1997	42.6	2004	
				%15.4
%46.8	296.2			-
%50.4	152.2		2004	
%10			1997	
%19.6	124.1			-
	53.1		2004	
			1997	%17.6
				%12.9
		%47.3	58.7	
	%54.5	28.96	2004	
			.1997	
		%28		2004
	%8.1			%12.8
			¹⁷ .%3.5	
				-2
)2004	461.7			%12.7
124.97		%67.3		310.9
200.6	(%32.7	¹⁸	
	%75.6		151.7) 1997
	(%24.4		48.9



2004	66.1%	205.4	12.7%
2004	60.3%	91.4	204
1997		54.1	35.2
2004	22.4	1997	20.1
2004			15.4% 6.7%
2004	742		15.4
1997			687 17



90.9

%19.4

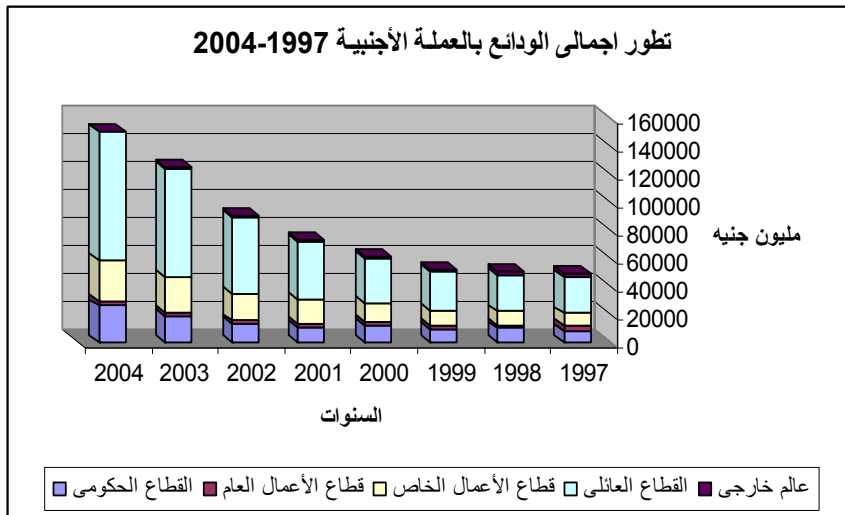
2004

%60

.1997

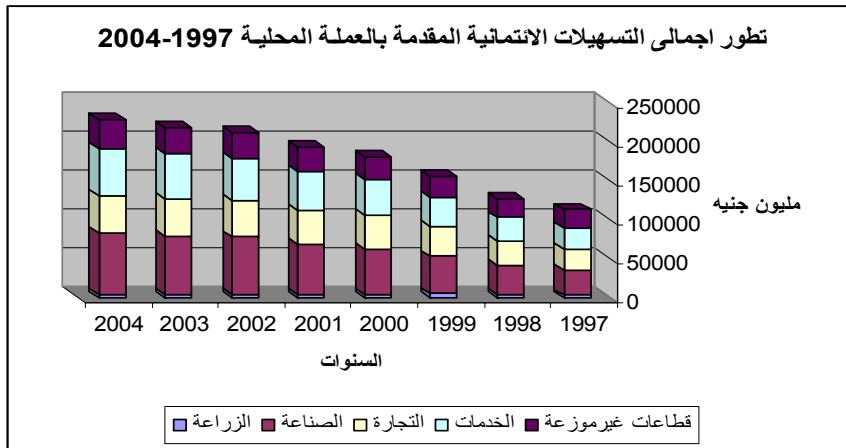
%53.6

26.2



-3) (:

296.2	152.2	2004	2004	%46.8
		. 1997		%50.3
%34	77.7			
32.9	2004			
				%29
2004	60.5	%26.5	.1997	25.6
		%22.5		
48.5				
26.97	2004	36.4	5	
	.1997	24.8	3.3	
%23.8	2004	%16	%2.2	%21.3
		.1997	%21.8	%2.9



%42

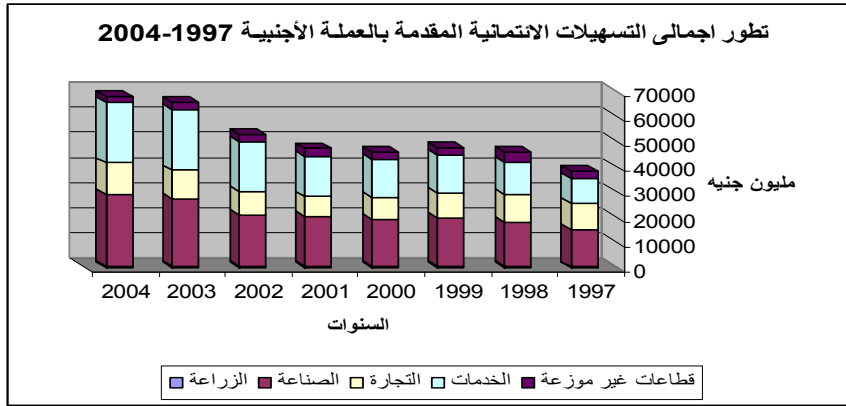
1997

%38.3

2004

(2004-1997)

% 27.2 %17.5 % 25.6 %35.6
%0.9 %0.8



-1997)

-:

-1997

2004

%86

5

146

14.8			%26.7	
		.1997	20.2	2004
				:
	-	-		
%69	1997	%75.6		
2003	%31			2003
		.1997	%24.4	
		2001	11	

19

1999/1998 %1.5
2003/2002 %19.5
20 %25.2 %6.4

2003 88 71

%30

%89

21

:

:

:

(2004-1997)

(1)

2004	2003	2002	2001	2000	1999	1998	1997	
10	10	11	11	12	12	12	12.25	:
								-
								:
7.68	8.46	9.42	9.43	9.29	9.00	9.10	10	3
13.27	13.45	14.10	13.57	13.11	13.20	13.20	13.80	.
								:
11.279	10.270	7.198	9.059	9.094	8.84	8.80	8.90	91
11.3	10.228	7.651	9.077	9.095	8.84	8.80	8.90	182

(2004-1997)

(2)

2004	2003	2002	2001	2000	1999	1998	
434911	384262	328728	284873	255272	234568	210487	:
77606	67212	59805	53448	49738	48838	43588	.
55933	48258	42299	38161	35042	32875	29518	
21673	18954	17506	15287	14696	15963	14070	
357305	317050	268923	231425	205534	185730	166899	.
233610	212010	192718	170681	157602	145199	128668	
123695	105040	76205	60744	47932	40531	38231	:
45241	25429	17285	18957	23393	29385	44836	
422040	387446	360090	321870	286639	256830	211827	
-32370	-28613	-48647	-55954	-54760	-51647	-46176	

(2004-1997)

(3)

2004	2003	2002	2001	2000	1999	
5412	5557	4453	3485	3431	3220	
124099	111337	87726	71142	60818	60114	:
58699	53651	39740	28442	20601	21342	
35120	33666	24423	20899	19888	19187	
116290	110873	83245	67047	49400	45098	
43290	29799	20002	16252	17776	16106	
296199	284721	266100	241470	226776	204132	
34814	35650	33939	28966	24137	22956	
633436	577937	495465	428362	382338	351626	=
20346	18155	12531	12038	11764	11373	
11454	11805	11238	10156	9226	8132	
44584	40099	35869	31200	27554	25984	
15012	14866	14057	11922	10579	9147	
29933	35580	35094	28158	24210	21413	
10332	16246	11831	11486	9970	11306	
461697	403145	340868	291224	260429	237343	
40078	38041	33977	32178	28606	26928	

:

(4)

(2004-1997)

2004	2003	2002	2001	2000	1999	
461697	403145	340868	291224	260429	237343	
310870	278180	250106	218237	199619	184756	
54120	46071	38578	31064	26201	21936	
15414	13929	13930	12814	12811	14135	
35219	30087	31594	29079	30976	31385	
205375	187595	165648	144986	129320	116470	
742	498	356	294	311	830	
150827	124965	90762	72987	60810	52587	
26187	18977	13328	10943	11898	9906	
3432	2878	2194	2580	2514	2049	
29550	25179	19426	17565	13703	11151	
90899	77111	54775	40782	31844	27998	
759	820	1039	1117	851	1483	

:

-1997)

(5)

(2004

2004	2003	2002	2001	2000	1999	1998	1997	
5015	4521	5166	4749	4828	5515	4217	3299	
77722	74269	73178	64950	58410	47698	37789	32928	
48479	47530	47251	42797	42919	37997	31021	26986	
60505	58546	54325	50260	45706	38277	30246	25568	
36438	33830	33088	31226	28810	26800	23266	24799	
228159	218696	213008	193982	180673	156287	126539	113580	
550	447	550	554	526	499	506	351	
28569	26782	20561	19772	18817	19277	17378	14796	
12552	11557	9175	7983	8790	10197	11189	10543	
23941	24341	20097	16124	14800	14856	13111	9873	
2428	2899	2709	3055	3170	3016	3656	3046	
68040	66026	53092	47488	46103	47845	45840	38609	

:

(6)
(2004-1997)

									24	4	
الإجمالي							11				
2325	64	976	22	2	14	42	21	90	298	883	1997
2391	63	994	23	2	14	42	20	98	312	908	1998
2434	63	1004	25	2	14	45	20	105	323	918	1999
2481	62	1029	26	1	14	47	20	112	340	913	2000
2536	62	1031	26	1	14	51	20	126	367	921	2001
2561	62	1033	26	1	14	58	20	136	375	919	2002
2582	62	1034	27	1	14	59	20	148	383	917	2003
2783	61	1189	27	1	14	59	19	162	409	923	2004

:

1974	355		"			"		1
								49
			"			:		2
	2-1	2001	"			"		3
				3		.1	92/91	
Money								
								Anchor
								M2
28-27	2003	78						
			2002	14	1975	120		4
24	2783	61	2004	30				
	30	923					409	
	(59			19	162		11)	
	27			14				
-			-			1189		
						(6)		5
				155	3-2	2002		
		(2003-1994)						-
	.20-13	2004		79				
5				155				

				13-12	2004/2/23	126	1833
		1		"...	"		6
							7
-255	1996			:	"		-
							267
		62-58		"...	"		-
-391		"			"		-
					27-26	1983	392
2003/2002		97/96	%4.8	2002/2001	%2.7		8
			%4				
				2003	29		
		.22	2003/2002				
				(100=2000/99)			
		%4	2004/2003	/	%11.1		
		.19	2004/2003				9
				-:			
		()					-1
							-2
							-3
							-4
							-5
		.2004					
				90-89	2004/2003		
				19	2004/2003		10
25	1984	396		"	"		11
5							156

	37	2003	4	56		12
72-71	2001/2000	41	4		:	13
		24	2003/2002			14
	.65-64					15
/	5.72				/	
					. 2005	
		32	2003/2002		.	16
	48	2004/2003			:	17
55				29.1		18
	149	"		"		19
%82	- 39	56	4			20
				1997	2003	21
					:	
				www.ndp.org.eg:		

"	:	"	-1
	2001		
	2003/2002	98/97	-2
	2003	4 56	-3
			-4
		www.ndp.org.eg:	
"		"	-5
		2002	
(2003-1994)			--6
2004		79	
"		"	-7
		2004/2/23	126 1833
.197 355	"	"	-8
1996	"	"	-9
-391	"	"	-10
		1983	392
"		"	-11
		92/91	
			-12
396	"	2003 78	
		"	-13
		1984	